

RESOLUTION NO.

15-25

Series of 2015

**TITLE: A RESOLUTION APPROVING A SITE PLAN FOR THE USE OF PROPERTY AS A TARGET RANGE PURSUANT TO SECTION 10-55 OF THE HUDSON MUNICIPAL CODE**

NOW THEREFORE BE IT RESOLVED BY THE BOARD OF TRUSTEES OF THE TOWN OF HUDSON, COLORADO, AS FOLLOWS:

Section 1. The Board of Trustees hereby approves the Site Plan for the use of the property more particularly described in **Exhibit A**, attached hereto and incorporated herein by this reference, as a target range, based on the Site Plan submitted as **Exhibit B**, attached hereto and incorporated herein by this reference. Said approval is contingent on satisfaction of the following conditions:

- The impact berm should be free from rocks, stones or objects that may tend to increase the possibility of ricochets; and
- The surface of the entire range should be relatively clear of any objects, stones or excessive growth that may tend to enhance the possibility of ricochets, or create bad footing conditions. The entire range shooting area should be relatively flat and level.

Section 2. Pursuant to Section 10-55 of the Hudson Municipal Code, the approval of the Site Plan is further contingent on the Town being authorized by the property owner to conduct reasonable inspections of the target range to determine it is being operated and maintained in a safe manner consistent with this site plan approval.

INTRODUCED, READ and PASSED this 5th day of August, 2015.

TOWN OF HUDSON, COLORADO



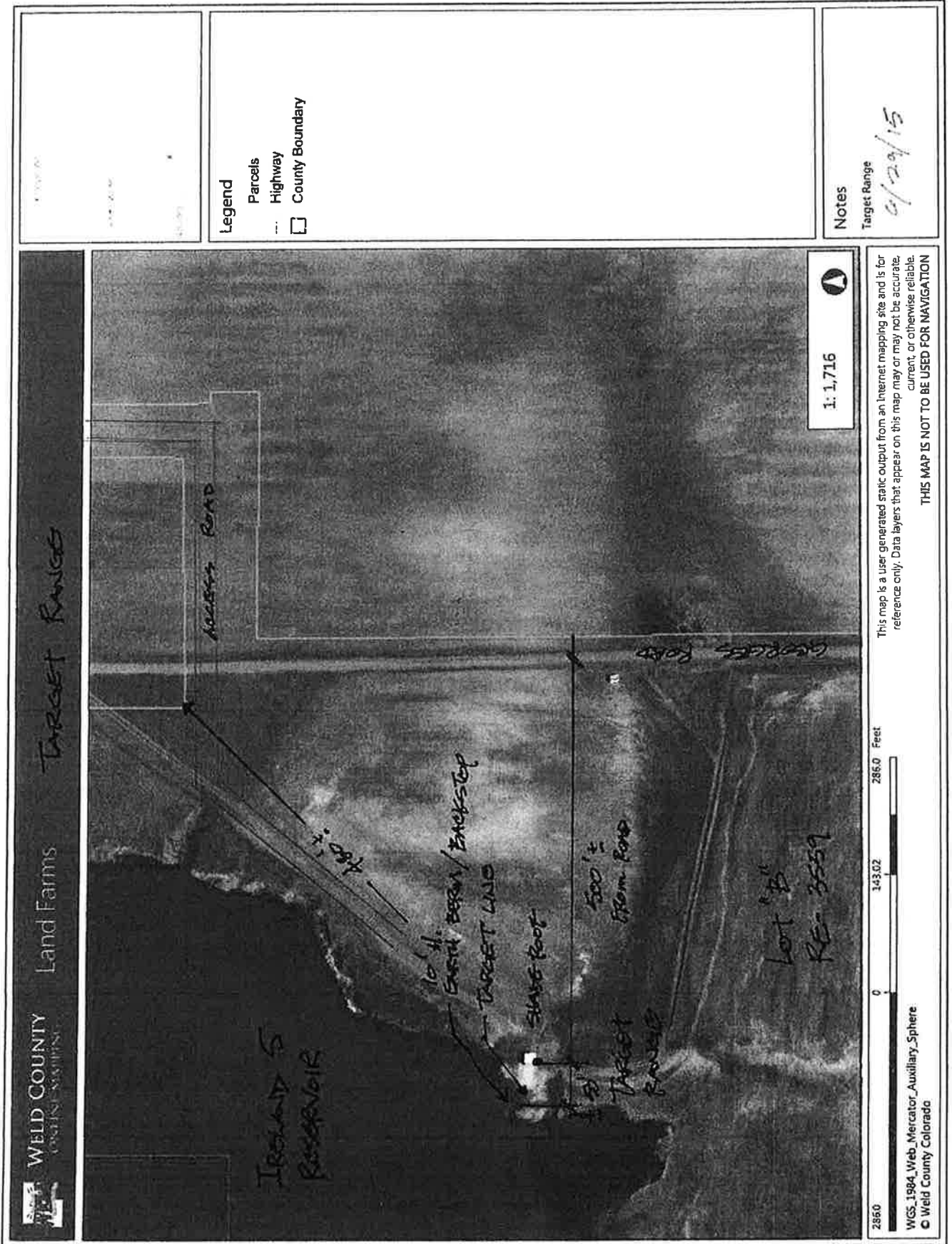
*Raymond Patch*  
Raymond Patch, Mayor

*Linnette Barker*  
Linnette Barker, CMC, Town Clerk

**Exhibit A**  
Property Description

Lot B, Weld County Recorded Exemption RE3559

Exhibit B



WELD COUNTY  
ONLINE MAPPING

Land Farms

Target Range

Legend  
 --- Highway  
 □ County Boundary  
 Parcels

Notes  
 Target Range  
 5/29/15

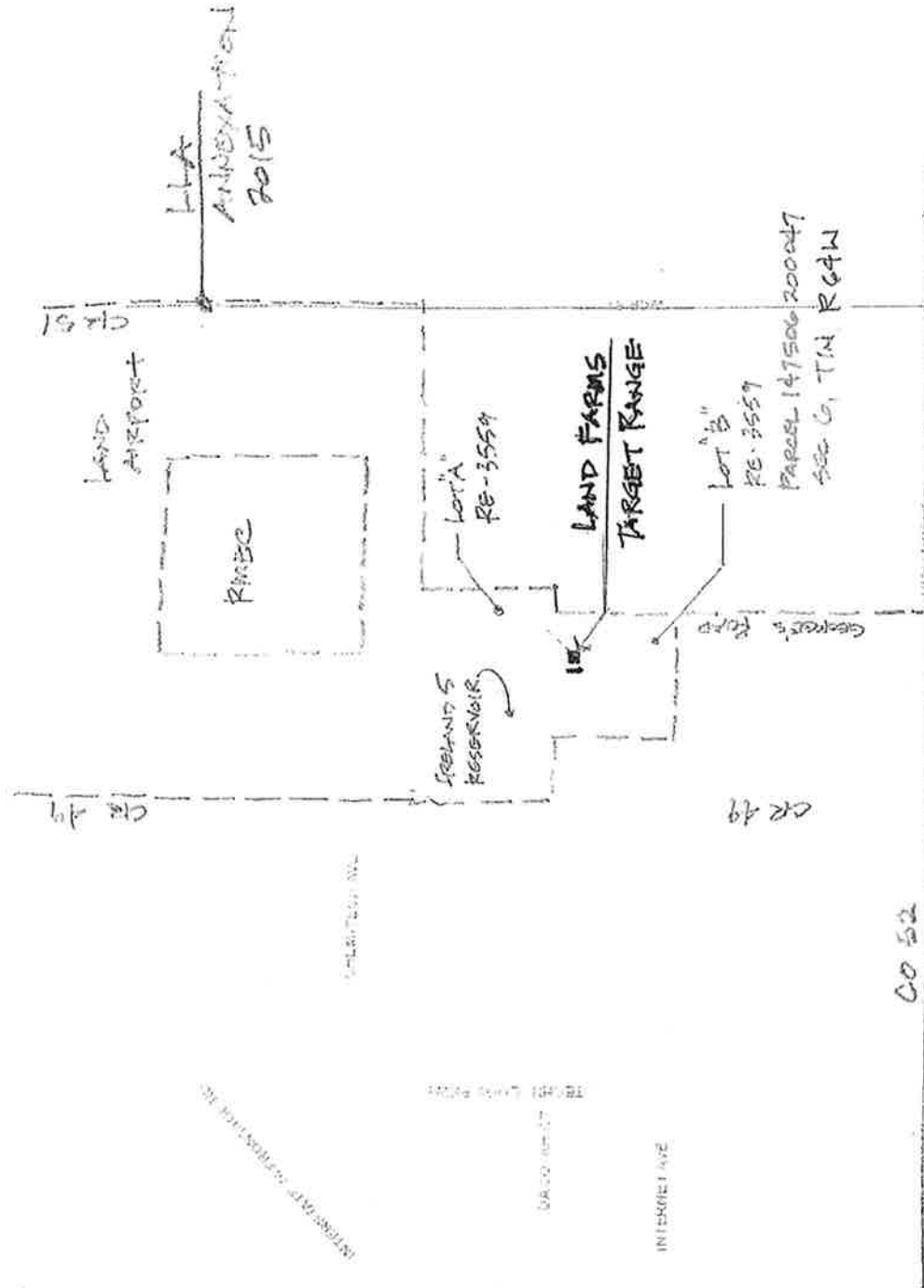
1: 1,716

This map is a user generated static output from an Internet mapping site and is for reference only. Data layers that appear on this map may or may not be accurate, current, or otherwise reliable.  
**THIS MAP IS NOT TO BE USED FOR NAVIGATION**

0 143.02 286.0 Feet

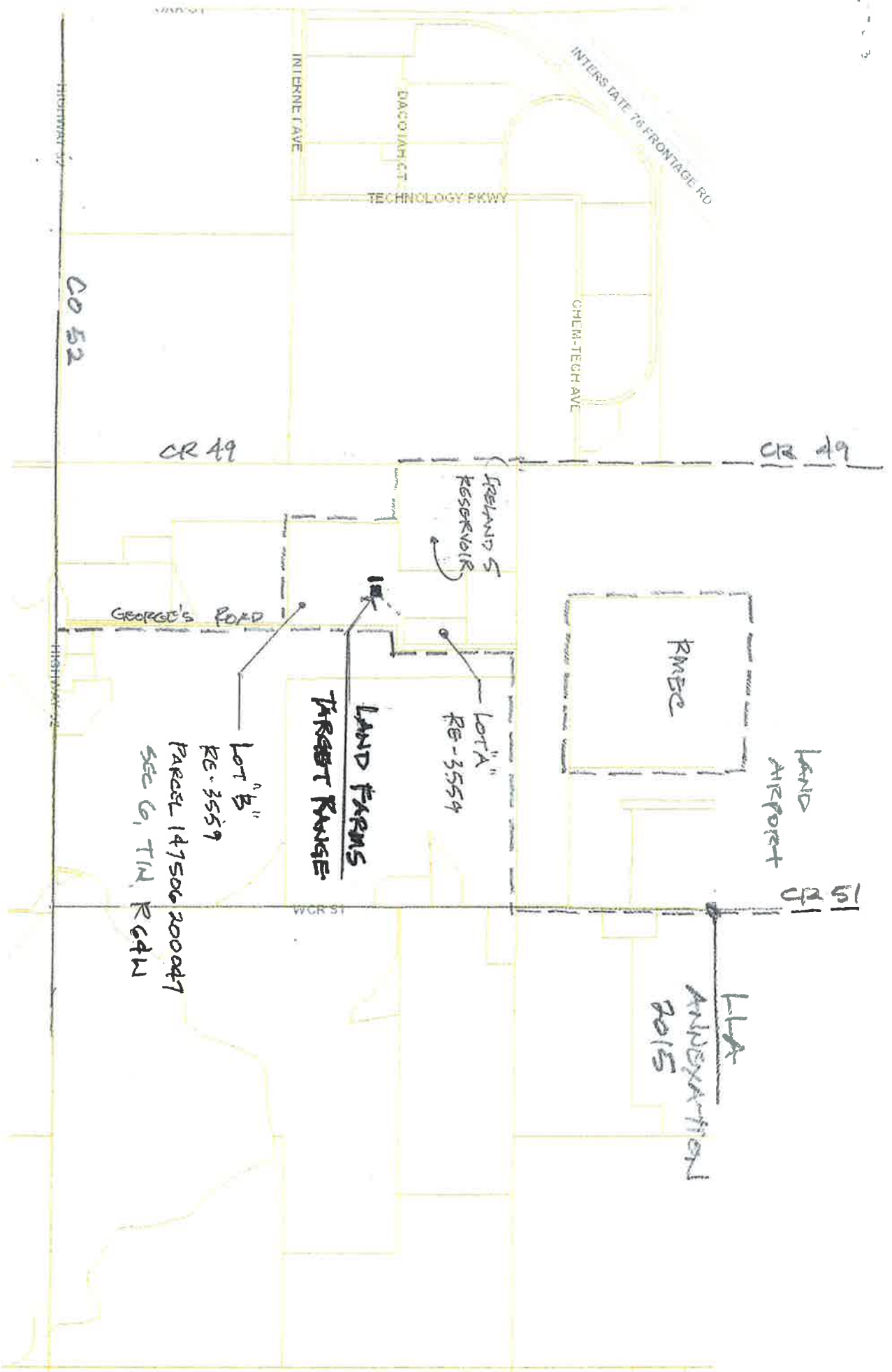
WGS 1984\_Web\_Mercator\_Auxiliary\_Sphere  
 © Weld County Colorado

Exhibit B (continued)



LAND FARMS - TARGET RANGE  
KEY PLAN 6/29/15

File with Resolution on Land Target Range



LAND FARMS - TARGET RANGE

KEY PLAN

6/29/15

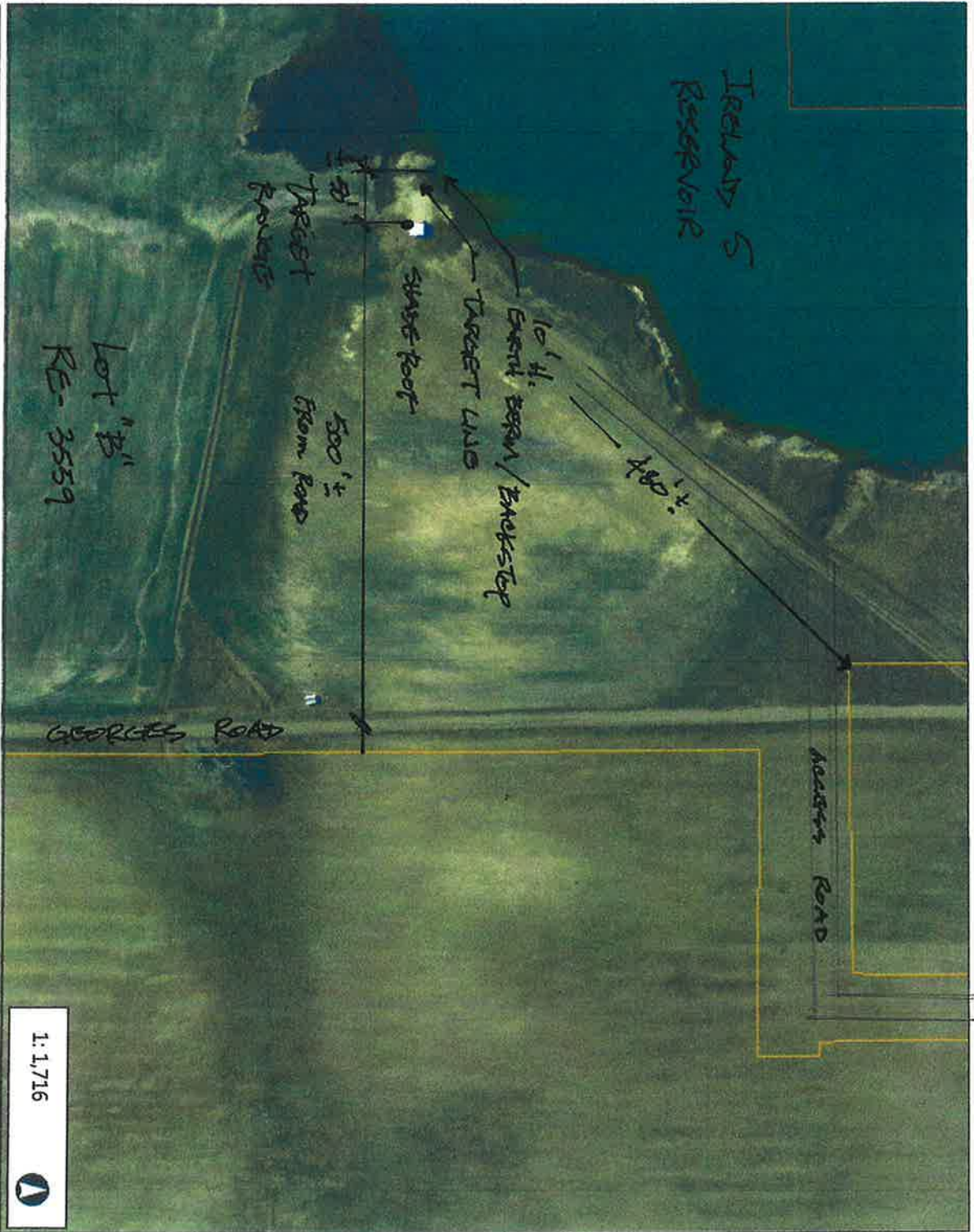




WELD COUNTY  
ONLINE MAPPING

Land Farms

Target Range

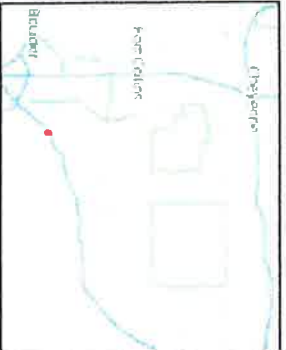


286.0  
0  
143.02  
286.0 Feet  
WCS 1984 Web\_Mercator\_Auxiliary\_Sphere  
© Weld County Colorado

This map is a user generated static output from an Internet mapping site and is for reference only. Data layers that appear on this map may or may not be accurate, current, or otherwise reliable.

THIS MAP IS NOT TO BE USED FOR NAVIGATION

1:1,716



- Legend**
- Parcels
  - Highway
  - County Boundary

Notes

Target Range

6/29/15